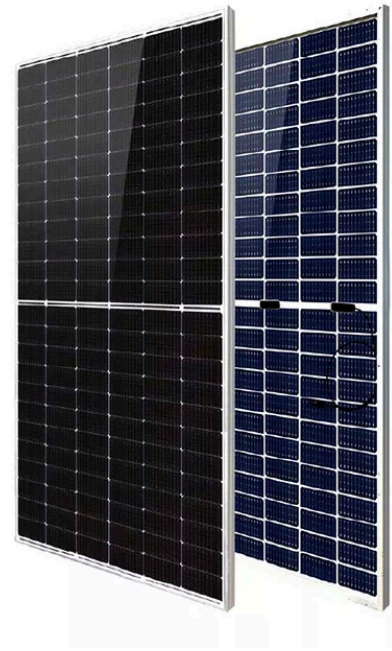


QUALITY  
RELIABILITY  
TRUE VALUE



# MONO MODULE

**SG7G72M(H)-XXX 144  
Pcs Half-Cut Bifacial**

**540W~555W**



### Better Temperature Coefficient

Excellent temperature coefficient gives higher yield in the long term



### Low-light Performance

Outstanding performance in weak-light conditions



### PID Free

Excellent PID resistance



### Quality Assurance

Double stage 100% EL inspection warranting defect-free products, with 8 high tech cameras to zoom in for a closer examination

### Durability And Weather Resistance

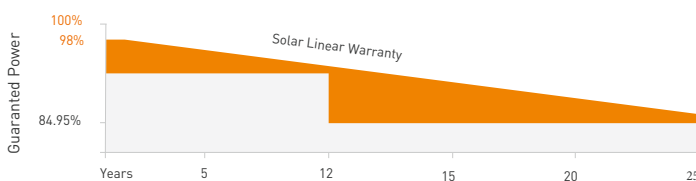


- Severe salt mist, ammonia & blown
- Certified for high snow(5400 pa) and wind (2400 pa) loads



Linear Performance Warranty

Standard Performance Warranty



01

MADE IN CALIFORNIA



02

25 YEARS  
LINEAR WARRANTY

12 YEARS WORKMANSHIP  
WARRANTY



## ELECTRICAL CHARACTERISTICS

Testing Condition	STC	NMOT	STC	NMOT	STC	NMOT	STC	NMOT
Maximum Power ( $P_{max}$ )	540	402	545	406	550	410	555	413
Voltage at Maximum Power ( $V_{mp}$ )	41.64	38.8	41.80	39.0	41.96	39.1	42.12	39.30
Current at Maximum Power ( $I_{mp}$ )	12.97	10.36	13.04	10.41	13.11	10.47	13.18	10.52
Open Circuit Voltage ( $V_{oc}$ )	49.60	46.7	49.76	46.8	49.92	47.0	50.08	47.10
Short Circuit Current ( $I_{sc}$ )	13.86	11.17	13.93	11.23	14.00	11.28	14.07	11.34
Module Efficiency (%)	20.90		21.10		21.30		21.50	
Operating Temperature	-40°C to +85°C							
Maximum System Voltage	1500V DC							
Safety Protection Class	Class II							
Maximum Series Fuse Rating	30A							
Refer. Bifaciality factor	70%±5%							
Fire Rating Performance	Type 4							

STC: 1 irradiance 1000W/m<sup>2</sup>, Spectra at AM1.5, Module Temperature 25°C. Power output tolerance: 0~+5W, Test uncertainty for Pmax: ±3%  
 NMOT: 1 irradiance 800W/m<sup>2</sup>, Spectra at AM1.5, Ambient Temperature 20°C, Wind speed 1m/s

## REAR SIDE POWER GAIN(REFERENCE TO 530W FRONT)

Pmax gain	5%	10%	15%	20%	25%
Pmax/W	557	583	610	636	663
Vmpp/V	41.32	41.32	41.32	41.32	41.32
Imp/A	13.47	14.11	14.75	15.40	16.04
Voc/V	49.32	49.31	49.32	49.32	49.32
Isc/A	14.41	15.09	15.78	16.46	17.15

## MECHANICAL CHARACTERISTICS

Cell type	Monocrystalline 182*91mm
Number of cells	144 (6x24)
Module dimensions	2278x1134x35mm (89.69*44.65*1.38 inches)
Weight	29kg (61.91lbs)
Front Glass	3.2mm tempered glass with AR coating
Back sheet	Transparent Backsheet
Junction box	IP68, 3 Bypass diodes
Cable	4mm <sup>2</sup> (0.006inches <sup>2</sup> ), 300mm in length or Customized
Mechanical Load	Front side 5400Pa, Back side 2400Pa
Connector	T01/LJQ-3-CSY/MC4 /MC4 -EV02

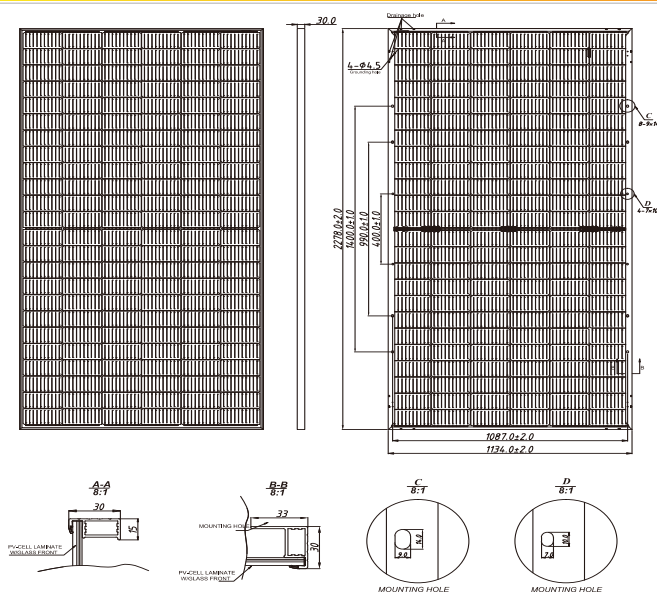
## TEMPERATURE CHARACTERISTICS

Nominal Operating Cell Temperature (NOCT)	43°C±2°C
Temperature Coefficients of $P_{max}$	-0.35%/°C
Temperature Coefficients of $V_{oc}$	-0.26%/°C
Temperature Coefficients of $I_{sc}$	0.048%/°C

## PACKAGING

Standard packaging	31pcs/pallet
Module quantity per 53' container	620 pcs

## ENGINEERING DRAWINGS



## IV CURVES

